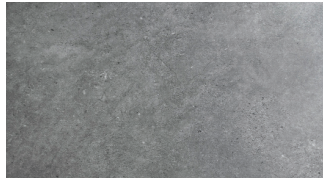


LYRUSFLEX

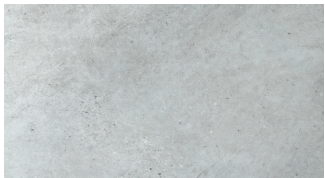
ELITE SERIES



Delano



Nebo



Timpanogas



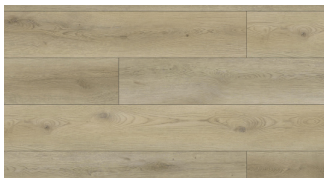
Mesa



Grand



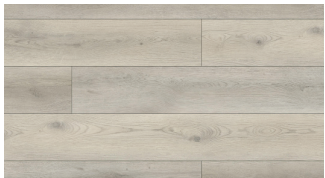
Lassen



Zion



Reef



Uinta



Glacier



Teton



Snow

Specifications

Material: 100% virgin vinyl with fiberglass stability layer

Plank Sizes: 9" x 60" | 18" x 36"

Thickness: 5 mm

Wear Layer: 30 mils ceramic bead infused

Finish: Natural matte emboss

Bevel: Micro-beveled edge

Installation Method: Loose lay/glue down

Plank Visuals (2x unique): Real Grain Technology

Features

- Waterproof
- Stain Resistant
- Pet Friendly
- Dent Resistant

Packaging

SQ/FT per Carton (9" x 60"): 30.0

SQ/FT per Carton (18" x 36"): 27.0

Warranties

Multifamily/Residential: 20 Year

Medium Commercial: 10 year

Certification

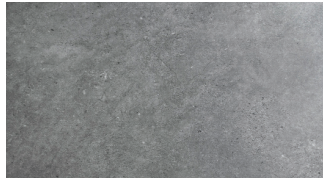
- SCS FloorScore® Certified
- Green Guard Gold

LYRUSFLEX

PREMIUM SERIES



Delano



Nebo



Timpanogas



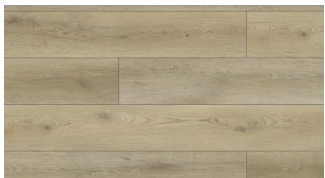
Mesa



Grand



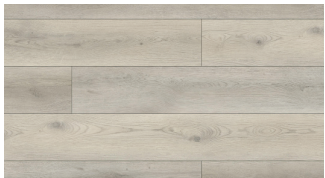
Lassen



Zion



Reef



Uinta



Glacier



Teton



Snow

Specifications

Material: 100% virgin vinyl

Plank Sizes: 9" x 60" | 18" x 36"

Thickness: 3 mm

Wear Layer: 20 mils ceramic bead infused

Finish: Natural matte emboss

Bevel: Micro-beveled edge

Installation Method: Glue down

Plank Visuals (2x unique): Real Grain Technology

Features

- **Waterproof**
- **Stain Resistant**
- **Pet Friendly**
- **Dent Resistant**

Packaging

SQ/FT per Carton (9" x 60"): 45.0

SQ/FT per Carton (18" x 36"): 45.0

Warranties

Residential: 20 Year

Multifamily/Light Commercial: 10 year

Certification

- **SCS FloorScore® Certified**
- **Green Guard Gold**

STONE COMPOSITE

ELITE SERIES



Katmai



Kenai



Wrangell



Gates



Carlsbad



Saguaro



Mesa



Grand



Joshua



Lassen



Snow



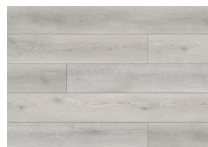
Zion



Reef



Uinta



Arch



Channel



Glacier



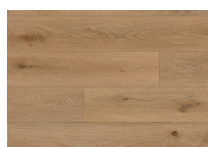
Cascade



Teton



Pinnacle



Basin

Specifications

Material: Stone Polymer Composite

Plank Size: 9" x 72"

Thickness: 5 mm (core) + 1.5 mm (pad)

Wear Layer: 30 mils (ceramic bead-infused)

Plank Visuals (2x unique): Real Grain Technology

Finish: Matte finish embossed in register

Bevel: Enhanced beveled edge

Attached Pad: 1.5 mm acoustical IXPE

Installation Method: Unilin locking system

Features

- **Waterproof**
- **Pet Friendly**
- **Stain Resistant**
- **Sound Absorption ***

* ASTM E492-09 Impact Sound Conduction IIC 57

Packaging

SQ/FT per Carton: 27

Warranties

Commercial: 10 year

Residential: 20 year

Certification

- **SCS FloorScore® Certified**

STONE COMPOSITE

PREMIUM SERIES



COMING SOON

Barr



Yuba



Placid



Ackley



Kitsap



Daroga



Vega



Sylvan



Palisade



Ponderosa



Bruneau



Gunlock



Kodachrome



Lory

Specifications

Material: Stone Polymer Composite

Plank Size: 9" x 60"

Thickness: 4.5 mm (core) + 1.5 mm (pad)

Wear Layer: 20 mils (ceramic bead-infused)

Plank Visuals (2x unique): Real Grain Technology

Finish: Matte finish natural embossing

Bevel: Enhanced beveled edge

Attached Pad: 1.5 mm acoustical IXPE

Installation Method: Unilin locking system

Features

- **Waterproof**
- **Pet Friendly**
- **Stain Resistant**
- **Sound Absorption ***

* ASTM E492-09 Impact Sound Conduction IIC 57

Packaging

SQ/FT per Carton: 33.60

Warranties

Light Commercial: 10 year **Residential:** 20 year

Certification

- **SCS FloorScore® Certified**
- **Green Guard Gold**

STONE COMPOSITE

SELECT SERIES



Zion



Reef



Uinta



Mesa



Lassen



Grand



Glacier



Snow



Teton

Specifications

Material: Stone Polymer Composite

Plank Size: 7" x 60"

Thickness: 4 mm (core) + 1.5 mm (attached IXPE pad)

Wear Layer: 20 mils

Finish: Matte finish embossed in register

Bevel: Micro-beveled edge

Attached Pad: 1.5 mm acoustical IXPE

Installation Method: Unilin locking system

Features

- Waterproof
- Stain Resistant
- Pet Friendly
- Sound Absorption *

* ASTM E492-09 Impact Sound Conduction IIC 57

Packaging

SQ/FT per Carton: 29.70

Warranties

Multifamily: 10 year

Residential: 20 year

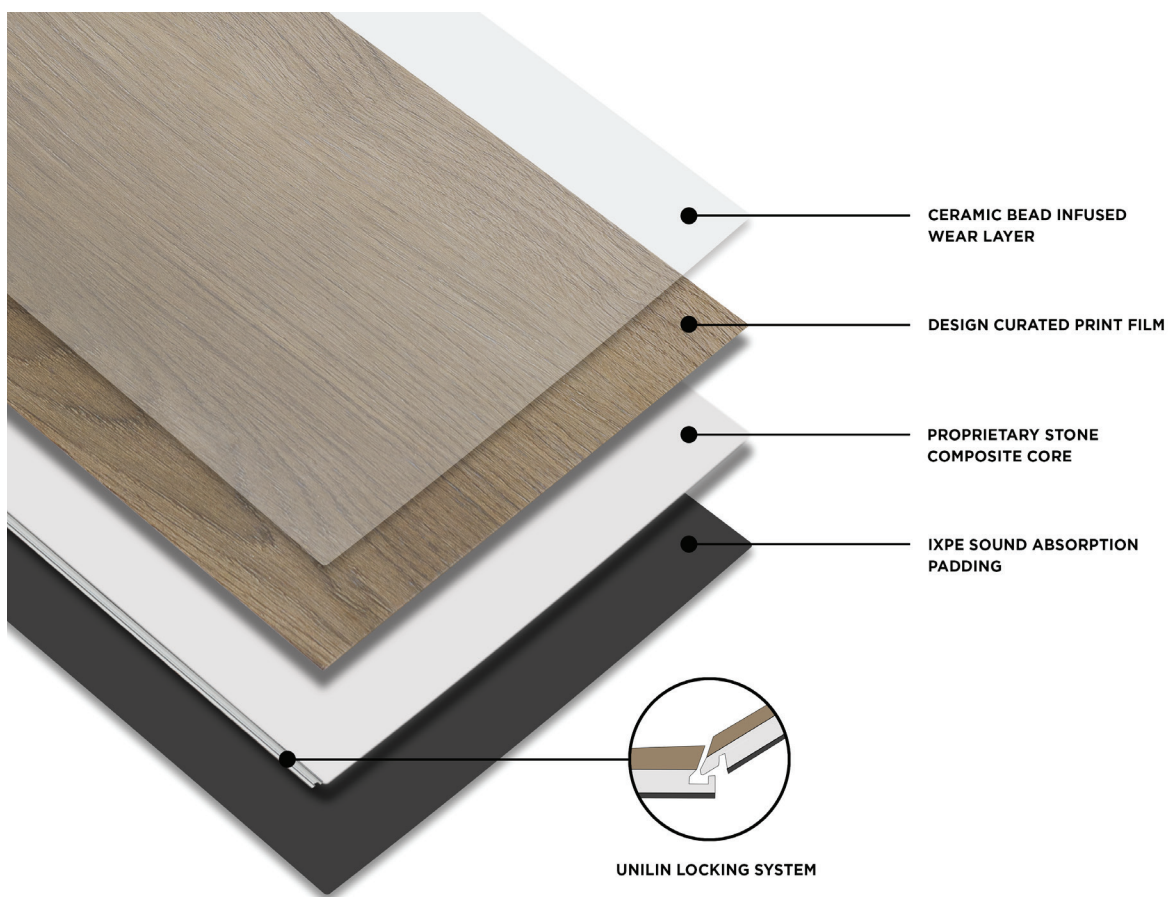
Certification

- SCS FloorScore® Certified
- Green Guard Gold

STONE COMPOSITE

COMPOSITION & TRANSITIONS

Composition



Transitions

